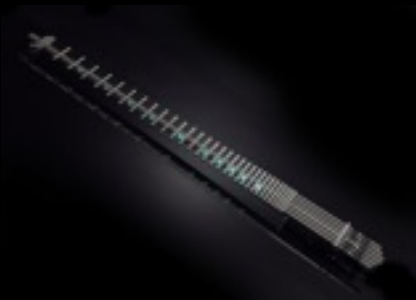


Gittler Guitar



The Gittler Guitar is a striking minimalist design incorporating rounded cylindrical and ergonomic features. The guitar is manufactured entirely of 6AL-4V aircraft grade Titanium.

With only 60 models made during the 1980's, the original guitar became legendary and iconic symbol of think forward design. Allan Gittler, the creator of the instrument, was a visionary musician who aimed to dispel the common misconceptions embraced by guitar players since the 1930's. His goal, and ours, is to provide modern guitarists a foundation from which to build their personal tone.

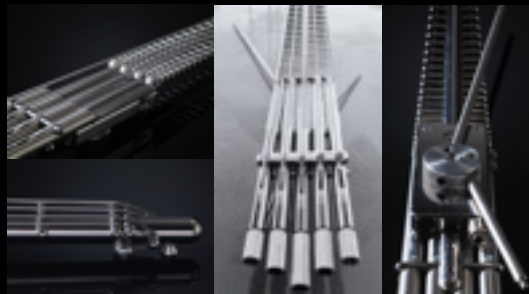
We at Gittler Instruments maintain that a musician should begin to develop his or her signature sound by starting with the purest signal, completely absent of coloration. Just as a painter begins with a blank canvas we believe each musical journey should begin with bare principles of vibration and gain.



"Music is of the highest of arts...It deals with sound, motion, time - and it's invisible." -Avraham Bar Rashi (Allan Gittler), Inventor of the Gittler Guitar.

Model: Classic 6 string
Scale: 25.5"
Frets: 31
Nut Width: 1.687"
Weight: 3 lbs.
Material: 6AL-4V Grade 23 Titanium
Strings: Standard ball end
Pickups: 6
Outputs: 1/4" Female and D13 (MIDI)
Fret Markers: LED "color choice"
Finish: Titanium, AFSE, DLC

Gittler Fretted Bass Guitar



Expanding on the success of the Gittler Guitar, we now present a range of bass instruments employing the trademark features of our think-forward design while simultaneously broadening our scope. Exceptional neck access, low action, piano string-like resonance and a range of ergonomic features not found on other basses anywhere in the world are all on accord.

High neck stiffness is one of the most prized attributes of a properly constructed bass. Some have chosen graphite or carbon fiber composites to achieve their objective of improving on the poor stiffness of wood. Here at Gittler Instruments we use a special grade of 6AL-4V Titanium developed for improved fracture toughness, ductility and fatigue strength.

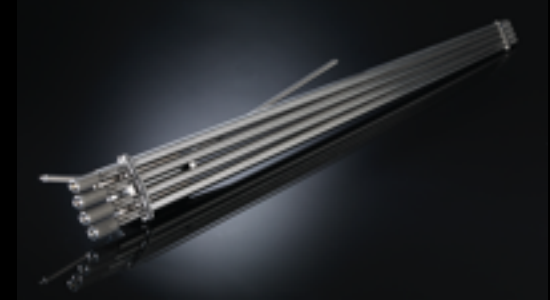
With its lower impurity limits of oxygen and iron, it is a superbly biocompatible material that offers class leading stiffness and strength, while still remaining warm to the touch due to a lower thermal conductivity and diffusivity than other metals.

All Gittler basses come fitted with an integrated balancing arm and bout wheel, allowing for a 360 degree range of motion to help the player fine tune his ideal point of equilibrium for comfort and balance. With 31 frets, LED fret-marking and a soft cutaway for the right hand to really "dig in" we have left the rest of the talking to our custom designed active electronics and pickups. Here at Gittler Instruments it really is a Brave New World!

Model: B4F 4-string fretted bass
Scale: 34"
Frets: 31
String spacing at nut: 0.412"
String spacing at bridge: 0.719"
Nut width: 1.736"
Weight: 6 lbs.
Material: 6AL-4V Gr. 23 Titanium
Strings: Standard - long scale
Pickups: 4
Outputs: 1/4" Female + D13 MIDI
Fret Markers: LED "color choice"
Finish: Titanium, AFSE, DLC

Model: B5F 5-string fretted bass
Scale: 34"
Frets: 31
String spacing at nut: 0.378"
String spacing at bridge: 0.710"
Nut width: 1.912"
Weight: 6.8 lbs.
Material: 6AL-4V Gr. 23 Titanium
Strings: Standard - long scale
Pickups: 5
Outputs: 1/4" Female + D13 MIDI
Fret Markers: LED "color choice"
Finish: Titanium, AFSE, DLC

Gittler Fretless Bass Guitar



Combining the warmth and sustain of a full scale upright bass with the punch and clarity of a solid body has long been the goal of most manufacturers. Here at Gittler Instruments we chose to take a holistic approach to manufacturing our first fretless instrument. We began by discarding all but the ergonomic factors and built our bass from the ground up to satisfy the desires of the player. At no point did we even consider existing design precepts or traditional manufacturing ideologies. With only 4 straight lines and a clean palette we forged forward with a fresh approach to decades of accumulated stoicism and the result is our B4U fretless bass guitar!

We wanted versatility and utility to be at the fulcrum of our attention. To that end, we designed our fretless bass so it could be played in either the horizontal or vertical position and we spared no detail. The bass utilizes integrated angle cuts and a cylindrical design with tapered bores and micro welds to achieve a perfect ratio of geometry and balance. The simplest approaches are sometimes the most deceptive in their derivation. The B4U is our statement on the state of the art.

Model: B4U 4-string fretless bass
Scale: 34"
Frets: none
String spacing at nut: 0.395"
String spacing at bridge: 0.760"
Nut width: 2.074"
Weight: 7.2 lbs.
Material: 6AL-4V Gr. 23 Titanium
Output: 1/4" Female
Fret Markers: LED "optional"
Finish: Titanium, AFSE, DLC

LED Fret Lighting



The Gittler Guitar employs a luminescent fret marking system. Our unique implementation utilizes miniature cross holes and pinpoint LED's that shine up from a central gun-drilled channel. The result is a soft glow that illuminates the player and a series of tiny light dots that provide a trail map on a darkened stage.

Gittler Guard



The high-tech Gittler Guard is the first ever removable and replaceable guitar neck. Attaching the guard is literally a snap! It simply presses onto the spine and provides the player with a choice of customized neck profiles. Imagine being able to change the feel of your guitar from a slim speed profile to an asymmetrical design in under 10 seconds. The Gittler Guard is unique in its ability to emulate your favorite guitar playing experience.

Gittler Guitar (Armed Forces Special Edition)



Teflon™ impregnation of the base metal provides a smooth but extremely hard exo-skeleton. This interstitial coating is electrolytically applied, providing anti-galling properties and superior surface hardness. It is used in jet aircraft turbines, predator drones and military weaponry systems. It is extremely damage resistant and will rarely require cleaning or even polishing.

Patented Tuning Machines



The headless guitar tuners were developed in New York by Allan Gittler in the early 1970's. It was Patent Pending until 1978 at which time it received US Patent #4079652, preceding all other designs by more than 2 years. It's description of the preferred embodiment is very clear and simplistic. Often copied...but never rivaled!

Rounded Frets



31 of them in fact! The frets, like the majority of the instrument, are cylindrical. Here we have another classic example of form following function. A cylinder provides the smallest possible contact area for the string. Precisely defined fret spacing is the cornerstone of perfect intonation.

Headless Guitar Design



Our newly improved headstock "string lock" mechanism provides an isolated vice grip on each string individually and prevents your pitch from wandering. Like the rest of the instrument, it is a minimalistic design that makes string changes simple and fast. Because the string is not wound around a post, the chance for core and winding fatigue at such points is eliminated.

Superb Midi



Synth players love the Gittler Guitar because of its superb MIDI tracking, which we claim to be the best currently available. Gittler's patented electronic design benefits from hundreds of hours of research and labor. It is fully compatible with Roland™ and other popular MIDI units. The Gittler Guitar already provides a truly unique playing experience but the addition of six individual string outputs and a dedicated synth interface make it a new breed of musical instrument. The palette of tones and the ability to forge new ones is limited only by the players' imagination.



GITTLERINSTRUMENTS
LLC

"Minimalism at its Maximum"

